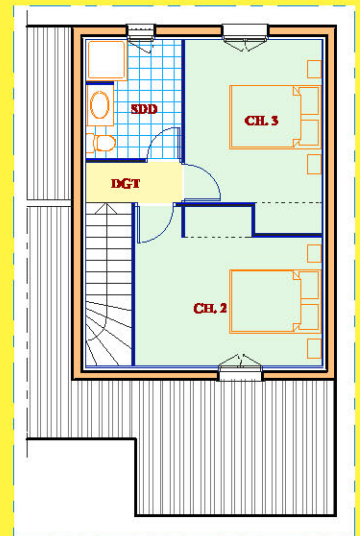
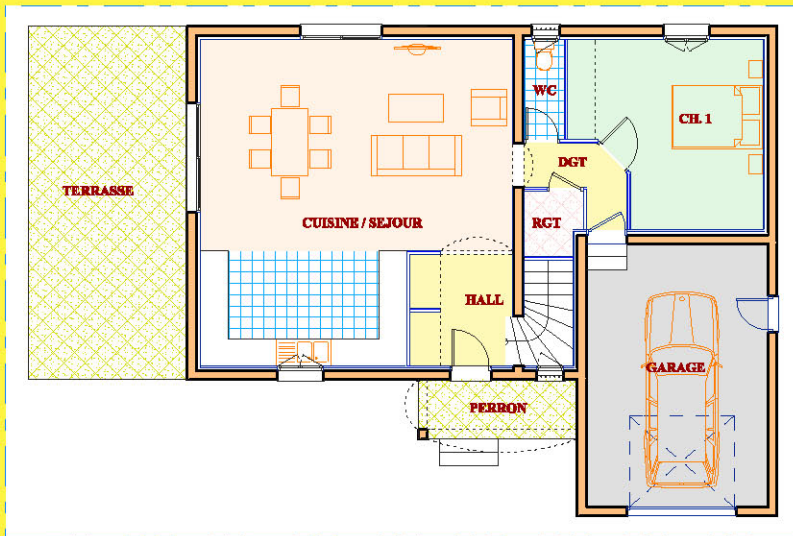


MODELE "YASEMIN"



RDC

HALL + PL	5,36 m ²
CUISINE / SEJOUR	43,59 m ²
DGT	2,88 m ²
WC	1,98 m ²
RGT	1,76 m ²
CH. 1 + PL	15,60 m ²
HABITABLE RDC	71,17 m²

GARAGE	23,20 m ²
PERRON	4,51 m ²
TERRASSE	27,30 m ²

ETAGE

DGT	1,89 m ²
SDD	5,48 m ²
CH. 2 + PL	13,49 m ²
CH. 3 + PL	11,90 m ²
HABITABLE ETAGE	32,76 m²

TOTAL HABITABLE 103,93 m²

